

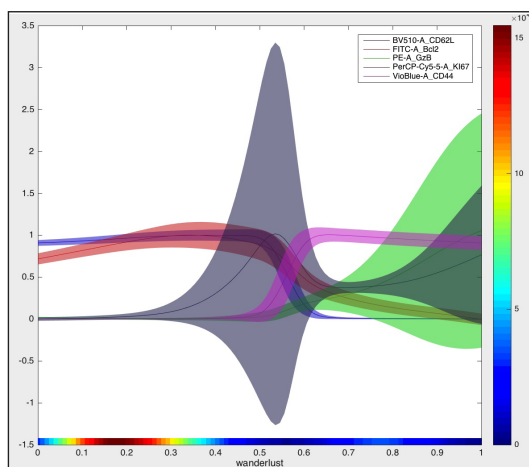
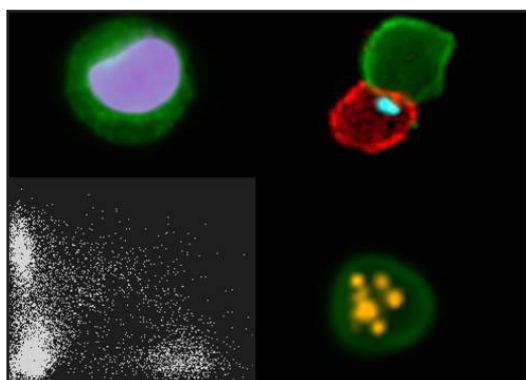
# Inserm Workshop 247

## Flow, mass, spectral cytometry and analysis tools for multiparametric data analysis

**REGISTRATION DEADLINE: June 16, 2017**

**ORGANIZERS:** Antonio COSMA (CEA, Fontenay-aux-Roses), Hervé LUCHE (CIPHE, Marseille), Jacqueline MARVEL (SFR BioSciences, Lyon).

**AIMS:** Multiparameter flow, mass and image cytometry imply mastering new tools to first analyze datasets in order to identify statistically different changes, but also visualize efficiently the results. To illustrate it, state of the art lectures on these sampling methods and data analysis pipelines will be presented.



### PHASE I – CRITICAL ASSESSMENT

September 25-27, 2017 in Bordeaux

#### STATE OF THE ART IN MULTIPARAMETER CYTOMETRY

Pratip CHATTOPADHYAY (NIAID, USA), Evan NEWELL (SIGN, SGP), Ana CUMANO (Institut Pasteur, FRA), Andrew FILBY (Newcastle University, GBR)

#### EXAMPLE OF APPLICATION OF MULTIPARAMETER CYTOMETRY

Tomas KALINA (Charles University, CZE), Sean HANNIFFY (CIML, FRA), Pierre FALSON (IBCP, FRA)

#### STATE OF THE ART IN MULTIPARAMETRIC DATA ANALYSIS

Emilie WESTEEL (UCBL, FRA), Yvan SAEYS (VIB, BEL), Evan NEWELL (SIGN, SGP), Attila TARNOK (University of Leipzig, DEU)

#### EXAMPLE OF APPLICATION OF MULTIVARIATE DATA ANALYSIS PIPELINES

Alberto ORFAO (Universidad de Salamanca, ESP), Jonathan IRISH (Vanderbilt University, USA), Antonio COSMA (CEA, FRA)

#### EMERGING TECHNOLOGIES

Bernd BODENMILLER (UZH, CHE), Pier Federico GHERARDINI (Stanford University, USA), Christian HENNIG (Zellkraftwerk, DEU), William TELFORD (NCI-NIH, USA), Robert BALDERAS (BD Biosciences, USA)



### PHASE II – TECHNICAL WORKSHOP

October 2-4, 2017 - Fontenay-aux-Roses / October 9-11, 2017 - Lyon / October 17-20, 2017 - Marseille

Phase II objective is to initiate participants to fundamental and applied aspects highlighted in Phase I of the workshop. Advanced training on MIC (Multiparametric Image Cytometry) will be dispensed at SFR BioSciences Gerland-Lyon Sud. Practical training on multi-parameter flow, mass and spectral cytometry (respectively MFC, MMC and MSC) will be performed on one single site at CIPHE (Marseille). Finally, a training focused on advanced data analysis pipelines will be performed at FlowCyTech (CEA, Fontenay-aux-Roses).

**SELECTION:** 8 trainees per session will be selected among phase I participants.

#### Information and registration:

Inserm - Pôle des ateliers  
101 Rue de Tolbiac  
75654 Paris Cedex 13  
Tel : +33 (0) 1 44 23 62 04 or 62 03  
Fax : +33 (0) 1 44 23 62 93  
[ateliers@inserm.fr](mailto:ateliers@inserm.fr)